



Board of Directors

President:

James LaRegina, P.G.

Herbert, Rowland & Grubic, Inc.
jlairegina@hrq-inc.com

President Elect:

Jeffery L. Leberfinger, P.G.

jeffleberfinger@gmail.com

Immediate Past President:

David B. Farrington, P.G.

Brickhouse Environmental
dfarrington@brickhouse-environmental.com

Permanent Director:

Richard E. Wright, P.G.

R. E. Wright, P.G., LLC
rewrightpg@comcast.net

Board Members:

Dennis R. Bell, Jr., P.G.

Skelly and Loy, Inc.
dbell@skellyloy.com

Dan A. Billman, P.G.

Billman Geologic Consultants, Inc.
danaret@zoominternet.net

Daniel Erdman, P.G.

Keystone E-Sciences Group, Inc.
derdman@keystoneESG.com

Valerie Holliday, P.G.

GeoLogos, LLC
vholliday5@comcast.net

Kelly Lee Kinkaid, P.G.

Liberty Environmental, Inc.
kkinkaid@libertyenviro.com

Jennifer L. O'Reilly, P.G.

Groundwater & Environmental Svcs, Inc.
joreilly@gesonline.com

Roger D. Moose, P.G.

rdmoose@comcast.net

Larry F. Roach, P.G.

Groundwater Sciences Corporation
lroach@groundwatersciences.com

Louis F. Vittorio, Jr., P.G.

EarthRes Group, Inc.
lvittorio@earthres.com

Jeffery K. Walsh, P.G.

Penn E & R, Inc.
jkw@penn-er.com

Donald R. Wagner, P.G.

Stevens & Lee, P.C.
drw@stevenslee.com

James D. Young, P.G.

EA Engineering, Science, and Technology, Inc.
jyoung@eaest.com

Donald Zuch, P.G.

HullGEC & Associates, Inc.
dzuch@hullinc.com

General Information:

info@pcpg.org



Can you identify this feature? See page 9.

this issue

DRBC Issues Draft Natural Gas Regulations **P.2**

An Interview With...Richard E. Wright **P.4**

2010 Field Conference Recap **P.6**

Upcoming Events **P.7**

Regulatory Notes **P.10**

Message from the President

2011 Preview

I don't need to review PCPG's 2010 accomplishments if you are a regular reader of our revamped quarterly newsletter, or are kept current with our new bi-monthly email blasts, or have visited and used our redesigned e-commerce capable website. So looking ahead, what can Professional Geologists and Environmental Professionals expect in 2011 as part of PCPG's mission to provide education, advocacy and networking?

For the PG, continuing education is on everyone's mind. By the September 30, 2011 renewal deadline, we need to affirm compliance with 24 credit hours of continuing education. A select few of us, if audited, will need to later provide hard copy proof of compliance. At our annual meeting on January 20, 2011, we will have Thomas Blackburn, Esq., counsel to the State Registration Board for Engineers, Land Surveyors and Geologists, give us an update on what to expect.

The popular Act 2 Tool Kit course series will continue where, for one day out of the office, you receive training on essential topics you can readily apply the next day or the next week. We hope to extend the Tool Kit approach to the Shale Gas market as well. Your suggestions for new courses, course locations and instructors that meet your needs are always encouraged. This year, PCPG provided over 4,000 professional development hours to over 500 attendees of our courses.

2011 will bring an emphasis on advocacy for the profession to provide PCPG members with an advantage that maximizes the benefits of what looks to be an improving economy. Because of PCPG's growing reputation as an independent, science-based organization, our opinion and participation have become increasingly sought after and recognized by various media outlets, the Shale Gas industry and PADEP. Our plan is to capitalize on this momentum with increased outreach to the State legislature, government agencies, allied organizations and academia.



(continued on page 3)

DRBC Promulgates Draft Natural Gas Development Regulations

-- Andrew J. Gutshall, P.G. (EarthRes Group, Inc.) and Louis F. Vittorio, Jr. P.G. (PCPG Board Member)

The Delaware River Basin Commission (DRBC) has promulgated a new Article 7 of their Water Quality Regulations. This Article was released for public review on December 9, 2010. The draft regulations apply to all natural gas drilling projects within the Commission's jurisdiction, and are available for review on the DRBC's website at: <http://www.state.nj.us/drbc/naturalgas-draftregs.pdf>

A fact sheet is also available at: <http://www.state.nj.us/drbc/naturalgas-draftregs-factsheet.pdf>

DRBC announced that three (3) public hearings will be held during the 90-day comment period to receive oral testimony on the proposed rulemaking. The locations and dates of those public hearings will be announced shortly. Please check the DRBC website for frequently to assess the status of the proposed meetings.

The draft regulations are provided to establish requirements that will prevent, reduce or mitigate the depletion and degradation of surface and groundwater resources within the Delaware River Basin. The regulations cover many aspects of natural gas development projects, including: siting, construction or use of production, exploratory or other gas wells regardless of the target geologic formation; water withdrawals; well pad and related activities; and wastewater disposal. Provisions presented in the draft regulations rely on Pennsylvania and New York oil and gas regulatory programs to prevent unnecessary duplication. The proposed Article 7 also supersedes the Executive Director Determinations issued on May 19, 2009, June 14, 2010 and July 23, 2010.

PCPG's existing Shale Gas Committee (SGC) plans to submit a response document to the DRBC regarding the draft regulations. We encourage you to review the DRBC's draft document and e-mail your comments to PCPG at SGC@pcpg.org for consideration and inclusion. The SGC asks that you send your comments by March 1, 2011 to ensure consideration and inclusion in our response.

Should you wish to provide DRBC with your individual comments, they can be submitted through their website (<http://www.state.nj.us/drbc>) or can be mailed to:

Commission Secretary
Delaware River Basin Commission
P.O. Box 7360
25 State Police Drive
West Trenton, NJ 08628-0360

Please include your name, address and affiliation. Printed comments will also be accepted at the public hearings.

As always, we urge all PCPG members to check our website (<http://pcpg.org/MarcellusShale>) for updates on the activities on the SGC. The Committee is currently busy preparing a couple white papers and our members have recently participated in several public forums. If you are interested in serving on the committee, please send an e-mail to the committee chairperson, [Dan Billman](#).

REMINDER!

The PGWA Winter Conference will be held January 27 & 28, 2011 in Grantville, PA

Check out www.pgwa.org for more information



(continued from page 1)

In 2011, we'll continue to offer peer-to-peer networking. To make the best use of your time, we have incorporated a networking component to our courses, as well as informal, after work gatherings. We plan to offer more of these opportunities outside of our traditional venues and expect to offer opportunities to network with prospective clients, as well. Watch for a session with the legal community early in 2011.

Lastly, what PCPG has accomplished in 2010 and is poised to do in 2011 is the result of many volunteer hours by the most engaged and passionate Board of Directors and committee members that I have had the opportunity to work with in my 10 years with PCPG. Thank you and thank you to the PCPG membership. It has truly been a pleasure and an honor to serve as your 2010 President.

Regards,

Jim LaRegina, P.G.

PCPG President

President's Footnote:

To those who have read my President's Message in the last newsletter, please consider joining PCPG and volunteering on a committee or doing whatever you do best to help further PCPG's mission. I think that you will find that today's PCPG is a dynamic organization that has evolved and grown beyond its original charter to now serve the needs of both PGs and Environmental Professionals.

Pennsylvania Has a New State Geologist

- From the Pennsylvania Geological Survey Website

DCNR Secretary John Quigley has announced the appointment of George Love to the position of Director, Bureau of Topographic and Geologic Survey. Love has been serving as the Assistant Bureau Director at the bureau since joining DCNR after retiring from Carmeuse North America in 2006. Love will function as the State Geologist of Pennsylvania and be responsible for directing the activities of the bureau's professional, technical, and administrative staff.

His more than 30 years experience in executive leadership includes positions in mining, minerals, exploration, permitting, geology, and geotechnical engineering in private industry and government. Love has led up to 240 workers with an overall operating budget of \$37 million. He has a master's degree in Geology and numerous credits in Civil Engineering and Soil Mechanics.



Photo Above: New PA State Geologist George Love

Love was born in Panama and still has family there. He is married with three children, and has grandchildren in Texas, Tennessee, and California.

The mission of the Bureau of Topographic and Geologic Survey is to serve the citizens of Pennsylvania by collecting, preserving, and disseminating impartial information on the Commonwealth's geology, geologic resources, and topography in order to contribute to the understanding, wise use, and conservation of its land and included resources.

Former State Geologist Jay Parrish stepped down in September and is now teaching remote-sensing online at the Dutton Institute at Penn State University.



An Interview with... Richard E. Wright (PA PG-000001-G)

-- Kelly Lee Kinkaid, P.G. (Communications Committee Chair)

When considering who to interview this quarter, it was suggested that I interview Pennsylvania PG 000001. At the time, I did not know (although I should have) that Pennsylvania PG 000001-G was PCPG's Founding President and Permanent Director, Richard E. Wright, P.G. With new continuing education requirements, the changing business climate due to the shale gas play now developing in Pennsylvania and a new Governor-elect, I thought this was an excellent suggestion. I (and our readers) could learn more about how geologists first came to be licensed in Pennsylvania, and also learn how our profession may have changed (at least in Pennsylvania) over the years. But before delving into these topics, I wanted to learn more about the man, what early experiences shaped his perspective and developed his passion for our profession.

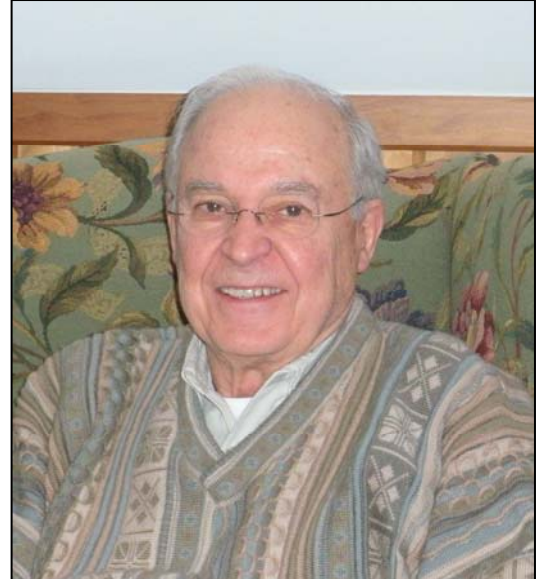


Photo above: Richard E. Wright, P.G., PCPG's Founding President and Permanent Director.

Q. Dick, can you tell me about your education? Where did you study geology?

A. I received my undergraduate degree in Geology from Franklin and Marshall College in Lancaster in 1958. I then moved to Utah and obtained a Master of Science in Geology from Brigham Young University in 1961. My Master's degree studies focused on stratigraphy, sedimentation, tectonics and paleontology and my thesis studied the Oquirrh Formation, to establish keys to depositional environments that would aid in the development of oil properties. I also pursued pre-doctoral studies in Earth and Planetary Sciences at the University of Pittsburgh in 1963-64.

Q. What about early work experience?

A. While at F&M [Franklin & Marshall] I was hired by the Survey [Pennsylvania Topographic and Geologic Survey] to aid in the mapping of the Stockton and Cambro-Ordovician rocks in southeastern PA. Then, while pursuing my Master's, I was employed by U.S. Steel as an exploration geologist, looking for ore deposits related to steel manufacturing in the western U.S. and Canada. After U.S. Steel shut down their exploration operations, I was hired by Anaconda to seek out precious metal and non-ferrous ore in the southwestern U.S.

I returned to Pennsylvania in the mid-1960's to pursue a doctorate, but a personal issue caused me to leave my studies and seek employment before completing my PhD. I began to work for E. D'Appolonia Associates in Pittsburgh as an engineering geologist, specializing in subsurface exploration and site development. D'Appolonia was an excellent civil engineering and geophysical firm, and my position with them took me all over the world. While working as an engineering geologist at a dam construction project in Nigeria as a subcontractor for Gilbert Associates, I met their director and he eventually hired me as the Chief Engineering Geologist for their geotechnical services group in Reading, PA. In this position, I was responsible for the subsurface evaluations prior to construction of the TMI (PA) and Crystal River (FL) nuclear power plants, and many other power generation plants across Pennsylvania.

(continued on next page)



(continued from previous page)

Q. How did you move from mineral exploration and engineering geology to environmental consulting?

A. *While at Gilbert Associates, I met Dwight Moody of Moody and Associates when they drilled some wells for us in western Pennsylvania and eventually came to work for them, primarily working in groundwater development and fracture trace analysis. In this position, I performed water resource contract work for the Pennsylvania Department of Environmental Resources [PADER], including directing the geology and groundwater portions of the water management studies for much of the State, sampling groundwater beneath old landfills and strip mines and serving on the PADER Water Resources Policy Advisory Committee. In 1975 I left Moody to found R.E. Wright Associates, Inc. [REWAI]. At REWAI, I became more involved in water resource and environmental investigations, aiding various entities in the development of water resource management plans and investigating and remediating contaminated sites (including the first Superfund site in the U.S., the Butler Tunnel in Pittston, PA).*

Q. You spear-headed the movement for the professional licensure of geologists in Pennsylvania, which I understand took 23 years to complete. There was obviously a lot of opposition to the idea, but there doesn't seem to be much concern about licensure now, can you tell me what some of the concerns were, and did they seem to have any validity once licensing began?

A. *The single impediment to licensure for geologists was the existence of engineering licensure. This was broadly construed to include geological services, which was an engineer's sole legal right to perform. In my capacity as Chief Engineering Geologist at Gilbert Associates, I supervised both engineers and geologists; and participated in the engineering design of many projects, but I could not seal any of the plans. At REWAI, I and other geologists worked in the design of numerous remediation systems, and acquired patents on several, but we could not seal any of the designs. A licensed engineer needed to review and seal all of these documents. Since a geologist could, by experience, get licensed as an engineer, the engineering profession contended that there was no need for a separate licensure for geologists. But, as society became more litigious, the engineers realized that they did not have the training and experience to perform geological work. We had to demonstrate that there was a necessity for the licensure of geologists (public health, safety and welfare) and prepared a book of case histories to document the need for licensure. The engineers gradually became supportive and justly supported our objective. The only other minor hurdle was the definition of geologist and engineer. It was difficult to come to an agreement so that there wouldn't be overlapping of professions. I am not aware of any circumstance where engineers took one side of an issue and geologists took the other side in my 13 years of service on the Board of Professional and Occupational Affairs for the licensing of Engineers, Land Surveyors and Geologists. After the law was passed, the engineers seemed very happy to discharge their geological responsibilities, and complete cooperation was and is enjoyed between Engineers, Land Surveyors and Geologists.*

Q. What new challenges are facing Geologists now as opposed to when the Commonwealth first granted P.G. licenses?

A. *I believe that now, more than ever, we need to be advocates for the responsible development of our natural resources. We need to work to change the public's mindset toward natural resources development to one of "temporary inconvenience." Oil, gas, base metals, earth metals, stone, aggregates, sands, oil rich clay...we need to know where they are and develop them responsibly. God gave them to us to use and made us the stewards over them. In my mind, we cannot continue to buy what we are constrained from developing and using; we must mine the earth, responsibly. We should not worship the earth; we should worship its creator.*

(Writer's note: Dick had much more to say than the space allotted for in this article. To learn more about the man, you can visit his website: www.rewrightpg.com)



Field Conference of Pennsylvania Geologists 2010

- Walt Leis, P.G. (Tetrahedron Consultants, Inc.)

On September 23rd through the 25th, 13 PCPG members were among the more than 200 attendees at the 75th annual Field Conference of Pennsylvania Geologists. From our “base camp” at the new Lancaster Marriott, the conference focused on classical (and newer) Appalachian Piedmont sites of the circum Susquehanna region. The kick-off evening symposium was presented by 13 of the field-trip leaders, who spoke of the latest tectonics and structural interpretations of the nearby 16 Pennsylvania Counties. These sites visited spanned diverse geo-environments, including the highly folded Conestoga limestone breccias, the enigmatic “Martic Contact”, the Accomac Volcanics and their linear mineralogical features, the Taconic structures at Sam Lewis Park, and the overturned Epler Formation at the Hempt Quarry.

The participants visited several biostratigraphic work sites where Ganis and Repetski unraveled the complex structures within the Martinsburg Formation. The re-interpretation of this area by geologists during the past 35 years has resulted in an understanding that has been possible only in the light of the evidence available to us through the “New” Global Tectonics.



Photo Above: Attendees examine boudinage structures in the Conestoga Limestone at the Prospect Quarry in Rheems.

tectonics imprinted by repeated ocean basin openings and closings. With Continental Drift as a driving force between the Cryogenian and the late Paleozoic, everything now seems to fit nicely, just like a crazy quilt where, thanks to the several presenters at the conference, we know the zircon dates and tectonic origins of each little patch sewn in the quilt.

(continued on page 8)



Photo Above: PCPG Members in attendance at the 2010 Field Conference of Pennsylvania Geologists.

The symposia and field trip celebrated the 50th anniversary of the 1960 Field Conference, which also highlighted the Pennsylvania Piedmont. The enhanced geological knowledge of the area since that first Piedmont conference is astonishing. For example, the Conestoga Limestone outcrop at Burle Industrial Park (site of the old RCA plant), now looked at with the knowledge of continental drift, is interpreted as a submarine slope collapse feature. Now, instead of the enigmatic and less than satisfying “F1 through F3 deformation sequences”, we look at the complex regional stratigraphy and



Photo Above: Attendees examine ptygmatic folding in the Conestoga Limestone at the Old RCA plant in Lancaster.



UPCOMING EVENTS

January 18, 2011

Surface Geophysics

Monroeville, PA

January 20, 2011

PCPG Annual Meeting

Harrisburg, PA

January 25, 2011

Geophysical Well Logging & Imaging

Malvern, PA

January 27 & 28, 2011

PGWA Winter Conference

Grantville, PA

www.pgwa.org

February 3 & 4, 2011

ASBOG Exam Prep and Practicing Geologist Review Course

Pittsburgh, PA

February 15, 2011

Structural Geology & Hydro-Structural Geology Theory & Application for the Practicing Professional

Malvern, PA

March 24, 2011

Introduction to Groundwater Geochemistry

Malvern, PA

March 25, 2011

Geochemistry of Remediation

Malvern, PA

Don't forget to check the
"Courses & Events" link on
PCPG's [home page](http://www.pcpg.org)
frequently for up to date
information on upcoming
educational opportunities.

PCPG Education Committee Plans for 2011

-- Jennifer L. O'Reilly, P.G. (Education Committee Chairperson)

Happy Holidays! The PCPG Education Committee has wrapped up our calendar of events for 2010 and is busy filling in the schedule for 2011. The Committee would like to extend our thanks and appreciation to all the course instructors and participants for making 2010 such a successful year. With the new continuing education regulations now in effect in Pennsylvania, we are working hard to set up a diverse schedule of courses for 2011.

Due to numerous requests, we will be holding a repeat session of the Surface Geophysics course that was offered for the first time this past year. The second offering of this course will be held in Monroeville on January 18th. Please note that there have been many early registrations for this seminar and it is filling up quickly! PCPG is also repeating our Borehole Geophysics course, which scheduled to be held in Malvern on January 25th, and our annual PG Review Course, which is slated for February 3rd and 4th in the Pittsburgh area. The PG Review Course is a two-day course that includes Fundamentals of Geology (Day One) and Applied Geology (Day Two).

PCPG has scheduled some new technical courses in the 1st Quarter of 2011, including Structural Geology and Hydro-Structural Geology (February 15 in Malvern), and an introduction to LiDAR (tentatively scheduled for March 2011, at a location to be determined). Rounding out the 1st Quarter of 2011, we are repeating our Introduction to Groundwater Geochemistry course and coupling it with a new Geochemistry of Remediation course to be held sequentially on March 24th and 25th in Malvern.

In addition to these technical courses geared to the practicing professional, we are offering the next installment in our USTIF Series: Comprehensive UST Compliance. This course is geared toward both UST owners and consultants, and we will be holding two sessions (Pittsburgh and Malvern).

We hope to see you at one of our upcoming programs. If you have any questions or suggestions for courses or events, please feel free to email me ([Jen O'Reilly E-mail](mailto:Jen.O'Reilly@pcpg.org)).

For more information or to register for upcoming courses, please link on the "Courses and Events" tab of our [home page](http://www.pcpg.org).

DON'T FORGET...

The **PCPG Annual Meeting** will be held **January 20th** at the
Holiday Inn East in Harrisburg, PA.

There will be interesting speakers, good food and fellowship.
Link [HERE](#) for the agenda and registration information.



(continued from page 6)

The PCPG members and others who attended the Conference all came away with new information about the geology of this corner of the planet (and the 15 PDH's didn't hurt either).

It wasn't coincidental that that work, included the efforts of one of our field trip leaders, Don Wise, and it must be stated that many of his past students were there to portray the ubiquitous scolithii (worm borrow for those who don't remember) trying to avoid being smooshed into synclines. The simulation entourage, lead by Layne Shultz, were especially convincing in their portrayal of a callow young scolithus unknowingly being impressed into the service of structural geology (see photo on right).



Photo Above: Layne Schultz and other past students of Don Wise portray scolithii at the 75th Annual Field Conference of Pennsylvania Geologists

Next year's Field Conference will be in western Pennsylvania. Details of the upcoming 2011 Field Conference are already on the [Field Conference website](#), (as are all kinds of goodies like out-of-print field guides, geo mementos, and assorted chotchkes).

below ground services Inc.

Below Ground Services (BGS, Inc.) is a service based company located in the Lehigh Valley/Pocono Mountains region in Pennsylvania. We provide Geoprobe®, Ground Penetrating Radar (GPR), and Pre-Clear/Vacuum Excavation Services tailored to environmental/engineering consultants, petroleum facility owner/operators, municipal governments, and landscape/excavation contractors.



Geoprobe® Services

- ✓ Overburden Monitoring Well Installation
- ✓ Prepacked Well Installation
- ✓ Remediation Well Installation
- ✓ Direct-Push Soil Borings
- ✓ Bacteria/Nutrient Injection
- ✓ Vapor Monitoring Point Installation
- ✓ Enclosed Geologist Trailer for Soil Logging



Pre-Clear/Vacuum Excavation Services

- ✓ Pre-Investigation Borehole Clearance
- ✓ Non-Destructive Utility Identification
- ✓ Utility Box/Catch Basin Clean-Outs



Ground Penetrating Radar Services

- ✓ Utility Locating
- ✓ Underground Storage Tank Detection
- ✓ Bedrock Mapping
- ✓ Three-Dimensional Data Viewing Capabilities
- ✓ Preferential Pathway Identification (Vapor Intrusion)

We accept Visa and MasterCard !



www.belowgroundservices.com

Call Today! (570) 992-0378



In Memory of Shams Siddiqui

-- Published in The Daily Local on 12/1/2010



Mohammad Shamsul Hasan Siddiqui Ph.D., P.H.G., P.G., 76, of West Chester passed away on November 22, 2010. Dr. Shams Siddiqui was the son of the late Mubarak Hasan Siddiqui and the late Haajirah Khatoon Siddiqui. He is survived by his wife Masooda B. Siddiqui; son Dr. Salim

Siddiqui, his wife Ruby, and their daughter Saira; son Azim Siddiqui; and daughter Nadia Siddiqui. He is also survived by his two brothers Shabi Siddiqui and Dr. Khwaja Siddiqui and many nieces and nephews. Born in Amroha, India, Dr. Shams Siddiqui arrived in the U.S. in 1963 on a Fulbright Scholarship to Penn State University and received his Ph.D. in groundwater hydrogeology under the mentorship of Dr. Richard Parizek. Recognized as an expert in his field, Dr. Siddiqui worked as a hydrogeologist since 1972 throughout the mid-atlantic region. He was a pioneer of several local Muslim communities and was a co-founder of the Islamic Society of Chester County. As a devoted family man and friend, he is remembered fondly for his compassion, generosity, and humanity. Services were held privately. Professional arrangements were handled by Wright Funeral & Cremation Services of Coatesville.

GUESS THE IMAGE...

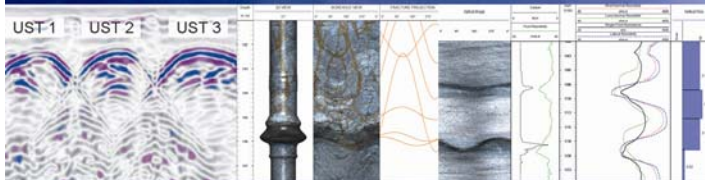
Were you able to guess the image on Page 1? It's a photograph of a scolithus (worm borrow). The photograph was taken by PCPG Past President Gary Kribbs, during the 2010 Field Conference of Pennsylvania Geologists. You can learn more about the 2010 Field Conference by reading the article submitted by Walt Leis, appearing on Pages 6 and 8 of this Newsletter.



Looking for quality, cost-effective geophysical services?



ARM GEOPHYSICS provides state-of-the-art, high resolution geophysical services. ARM utilizes surface and borehole geophysical methods to characterize the subsurface for a variety of applications, including water resource, environmental, geotechnical, mining, oil and gas.



BENEFITS OF USING GEOPHYSICS

- Cost-effective solutions
- Reduce total project time
- Locate borings or excavations at strategic sites
- Extend subsurface information
- Improve confidence levels
- Minimize health risks
- Correlate information between borehole sites
- Minimize impact to site and operations



Call
717-508-0555
or visit
armgeophysics.net



Regulatory Notes and Other Information

UECA Rules Become Effective

The final Uniform Environmental Covenants Act rules were published in the Pennsylvania Bulletin on Saturday, November 20, 2010 (Volume 40, Number 47, PP 6654 – 6661) and are effective immediately on publication (including the \$500 submittal fee for covenants that were already in progress on the effective date).

Oil and Gas Well Construction Standards May Soon Become Reality

On Thursday, November 18, 2011 the Independent Regulatory Review Commission (IRRC) unanimously approved revisions to the oil and gas well construction standard regulations. The final-form regulations were sent to the state Office of Attorney General for final review and approval. Given the DEP's, legislature's and public interest in the regulations, it is anticipated the Attorney General's review will be completed fairly quickly. The regulations will go into effect upon publication in the Pennsylvania Bulletin.

Approval Pending for New Land Recycling Regulations

On October 21, 2010, the Independent Regulatory Review Commission (IRRC) unanimously approved the Chapter 250 (Administration of the Land Recycling Program) final rule. The final-form regulations were then forwarded to the Office of Attorney General for review prior to publication in the Pennsylvania Bulletin. The DEP anticipates an early January publication date, at which time the regulations become effective.

PCPG Board of Directors Elects 2011 President-Elect

On December 16, 2010 the PCPG Board of Directors elected Louis F. Vittorio, Jr. P.G. to the position of President-elect for 2011. Mr. Vittorio is vice-president of EarthRes Group, Inc. (ERG) in Pipersville, PA

Oil & Gas Production Information Now Available On-line

As of November 1, 2010, the Pennsylvania Department of Environmental Protection (PADEP) has made oil and gas industry production and compliance information available online via an oil and gas public reporting [website](#). Per Act 15 of 2010, operators of Marcellus gas wells must report well production totals every 6 months, and all other oil/gas production wells must report annually. The website is searchable, and includes violation, inspection & enforcement information for 2008 – 2010. See the [official press release](#) from PADEP for additional information on the data that is now available online.

Continuing Education Regulations: Final Approval Imminent

On December 16, 2010, the Independent Regulatory Review Commission (IRRC) approved the final form of the amendments to 49 PA Code Chapter 37 (Continuing Education Regulations for Professional Engineers, Land Surveyors and Geologists). The grace period has been removed from the regulation and licensees will need to obtain 24 PDHs before September 30, 2011 or risk disciplinary action. (NOTE: If you go to the [Licensing Board website](#), you will find a link to a PDF document detailing guidelines for continuing education and a sample professional competency activity log.)

Because the legislature has adjourned for the year, the IRRC may not deliver the order to the standing committees until the fourth Monday in January or until both committees have been designated in the next legislative session, whichever is later. Upon receipt of the IRRC order, the standing committees have 14 days to review the regulation and report to the state House of Representatives and Senate a concurrent resolution. If the 14-day period expires and neither committee reports a concurrent resolution, the committees will be deemed to have approved the regulation.



PCPG Congratulates Newly Licensed Geologists

-- Source: Registration Board for Professional Engineers, Land Surveyors and Geologists

The PCPG would like to extend our congratulations to the following individuals who passed the ASBOG exam and were recently issued a Professional Geologist license in Pennsylvania:

Andrew Gobeil
Victoria Pitman
Albert Wylie, Jr.
Darren Lamsma
Stephen Wright
Mark Pomfrey
Pierre Macoy
Rolando Benitez
Cristina Jorge Schwarz
Douglas Raszewski
Tanner Sattler
Luis Sepulveda
Erich Zorn

James Succop
William Fischer
Peter Vogel
Thomas Becker
Eric Aufderhaar
Christopher Turner
Muhammad Babar
Christopher Collet
Jennifer Kilburn
Carl Rinkevich, II
Mark Saunders
William Wettstein
Daniel Raines

William Stephens
David Cornue
Brian Bohm
William Mikalik
Kevin Zeunert
Andrew Aceves
Paul Owens
Frank Nemec
Rae Brown
Thad Slaughter
Eric Schinsing

Good luck in your geology career!



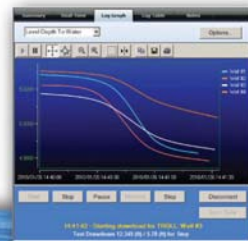
Virtual HERMIT® Kit Streamlines Pump Tests

The **Virtual HERMIT Aquifer Testing Kit** simplifies step-drawdown and constant-rate pump tests. Monitor all deployed **Level TROLL® 700** instruments with one system.

- Rent Virtual HERMIT software and customized instruments only from In-Situ® Rentals.
- Simultaneously configure, start, view, or stop all connected instruments.
- Step a test and capture pump and recovery data on the same log.
- Minimize data processing.

For more information, visit www.in-situ.com
and call us at **1.800.446.7488**
or call Rachel Bowen at **1.518.312.3860**

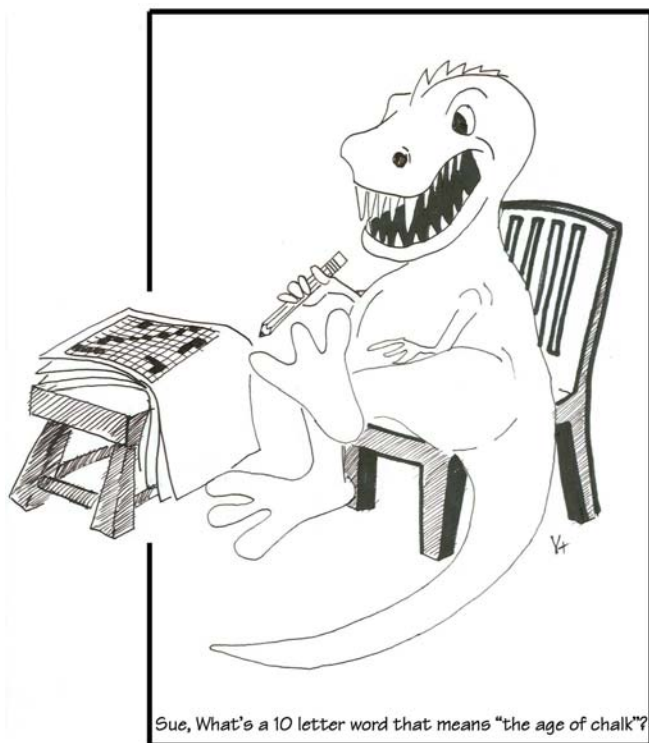
View results during test.



 **In-Situ Inc.**

Innovations in
Water Monitoring





-- Cartoon provided courtesy of Walt Leis

DEADLINE FOR 1st QUARTER 2011 NEWSLETTER IS MARCH 1, 2011

For more information, contact our PCPG
Newsletter Editor and Communications
Committee Chairperson,
Kelly Lee Kinkaid, P.G., by [E-mail](#) or by telephone
at 610-375-9301.

2011 PCPG MEMBER AD RATES

(Rates are listed as amount per issue)

Size	Commitment:	1x	4x
1/2 Page		\$225	\$150
1/4 Page		\$140	\$95
Business Card (H or V)		\$75	\$50

2011 PCPG NON-MEMBER AD RATES

(Rates are listed as amount per issue)

Size	Commitment:	1x	4x
1/2 Page		\$300	\$240
1/4 Page		\$185	\$150
Business Card (H or V)		\$100	\$80

ADVERTISERS: Please remit payment to PCPG, 116 Forest Drive, Camp Hill, PA 17011



Pennsylvania Council of Professional Geologists

116 Forest Drive
Camp Hill, PA 17011
www.pcpge.org